

Echolink and IRLP

A Presentation for CCARES

October, 2020

Rick DeWitt AA0RD



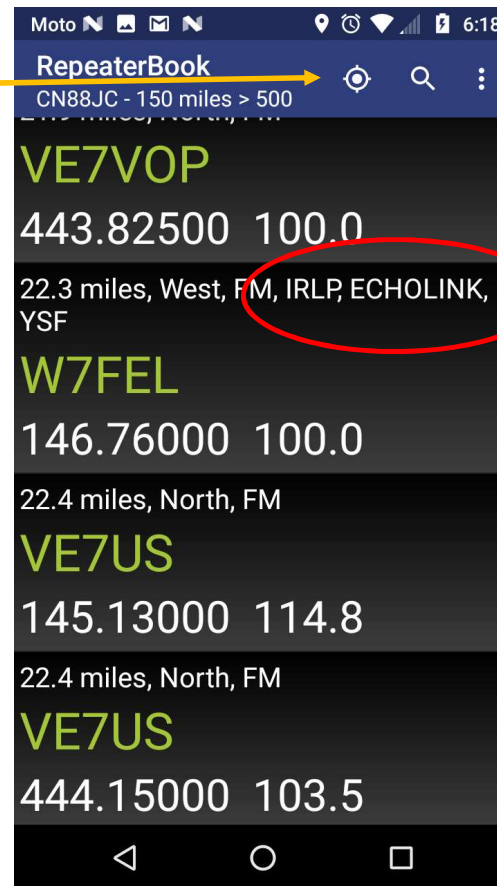
What are they?

- FRM: Frickin' Radio Magic
- They are systems that allow you to access (pop-out at) a far away repeater
 - They can be used to check in to a net when you are travelling or can't hit the repeater
 - They can be used to annoy Chuck Jones and perform “fake” DX connections
- VHF / UHF / 6m repeater owners can install hardware and software to put their repeater TX and RX audio over the internet using VOIP
- This allows you to access a far-away repeater either from a local one or from a s/w app (Echolink)
- Be aware that these are **NOT** private connections
 - Your transmissions are being broadcast at the repeaters
 - LISTEN before you transmit
- Use RepeaterBook to find repeaters that support these features



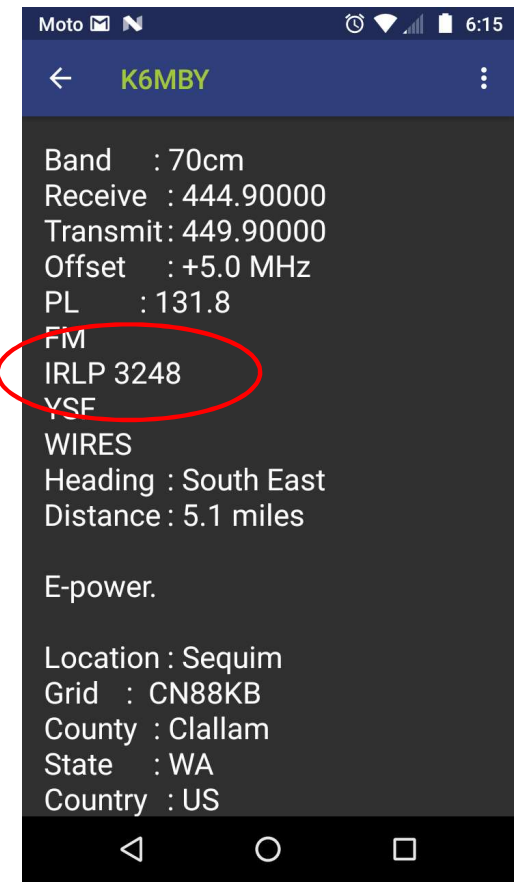
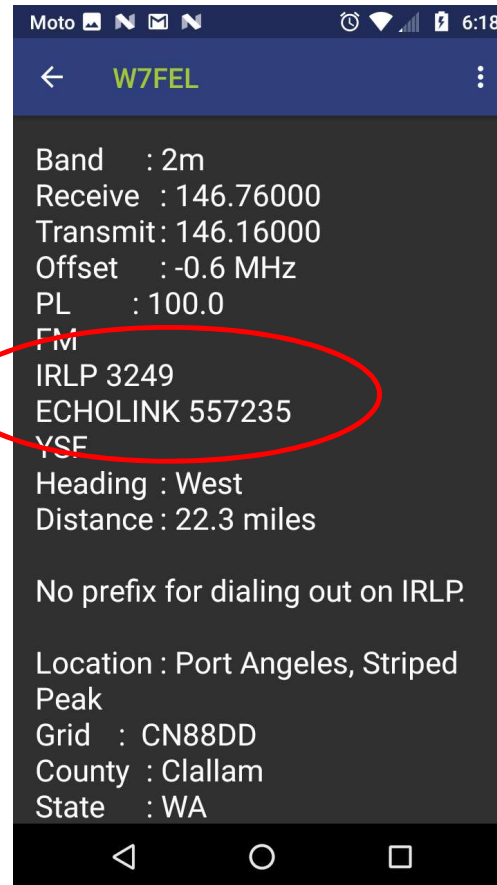
Free RepeaterBook Android App

- Search from you current location
 - Use the GPS “target” icon
- Search at a different city
- Search a specific frequency
- Search for a specific call sign
- Specify what bands to include
- The Echolink app provides an alternate location search
- Tap to get connection info

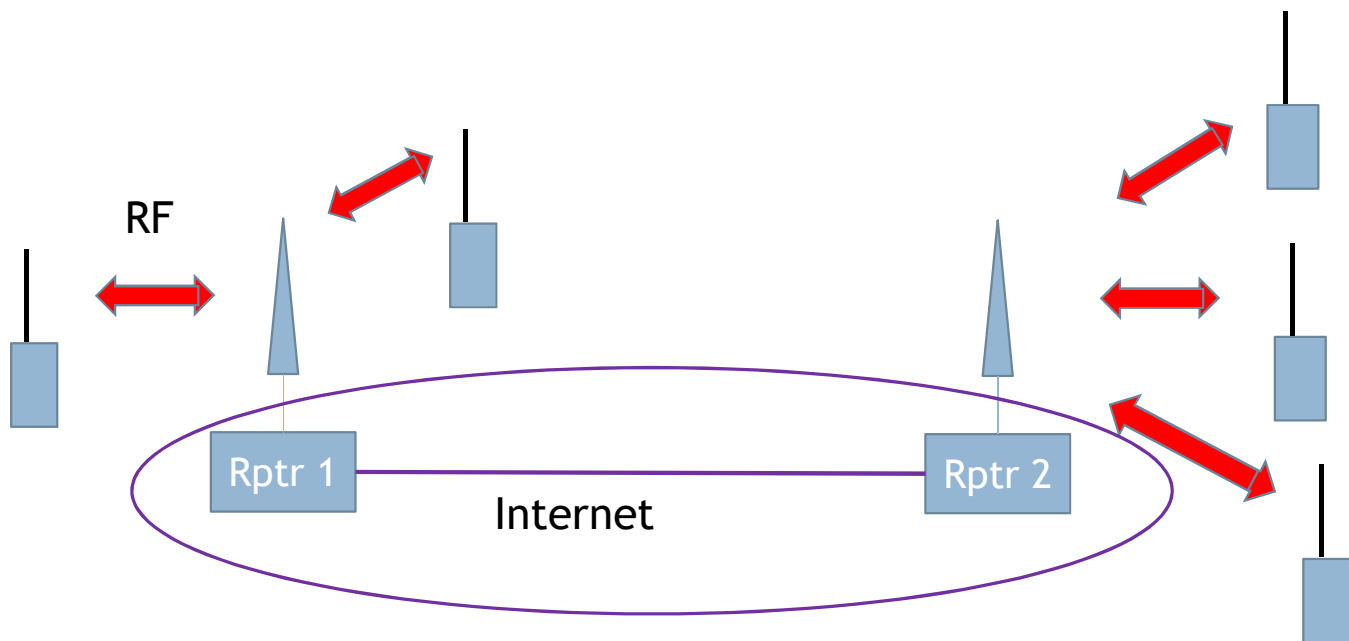


W7FEL & K6MBY Specifics

- Location
- Distance
- Offset
- PL Tones
- IRLP and Echolink Nodes



IRLP Connection



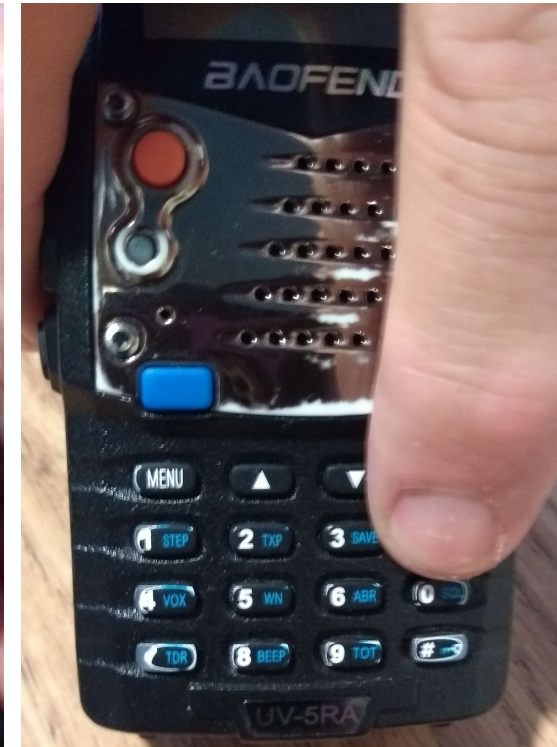
IRLP (irlp.net)

- Internet Radio (Repeater) Linking Project
 - Developed in 1997 by David Cameron, VE7LTD
- Connects two or more IRLP-enabled repeaters via internet
- Both repeaters are “hot”
- USE DTMF tones to enable or drop (73)
- 9990 node is “echo-reflector” for loop-back testing
 - Records your transmission and plays it back
 - Everyone on the LOCAL repeater Tx and Rx frequencies can hear it
 - Press 73 to disconnect
- Delay after pressing PTT before speaking or sending codes
 - There can be both internet and repeater delays
 - It is recommended to pause 5 secs between transmissions



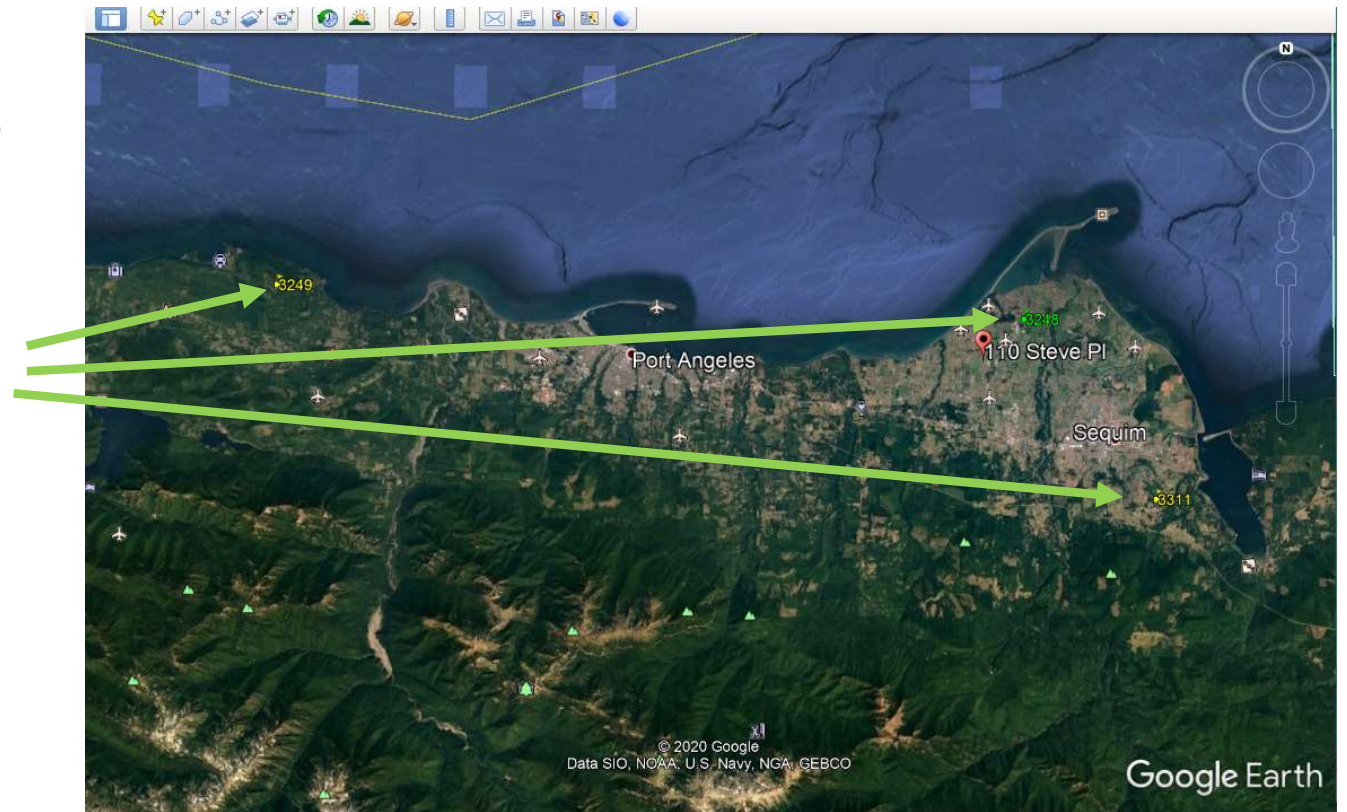
Sending DTMF Tones

- Press and HOLD the PTT button
- Press the tone codes in sequence
- They only need to last 0.2 seconds
- Usually a 2-handed process
- Know where A,B,C,D,* and # are
 - They may required for an unlock prefix
- Send 73 to disconnect
- W7FEL has a prefix required



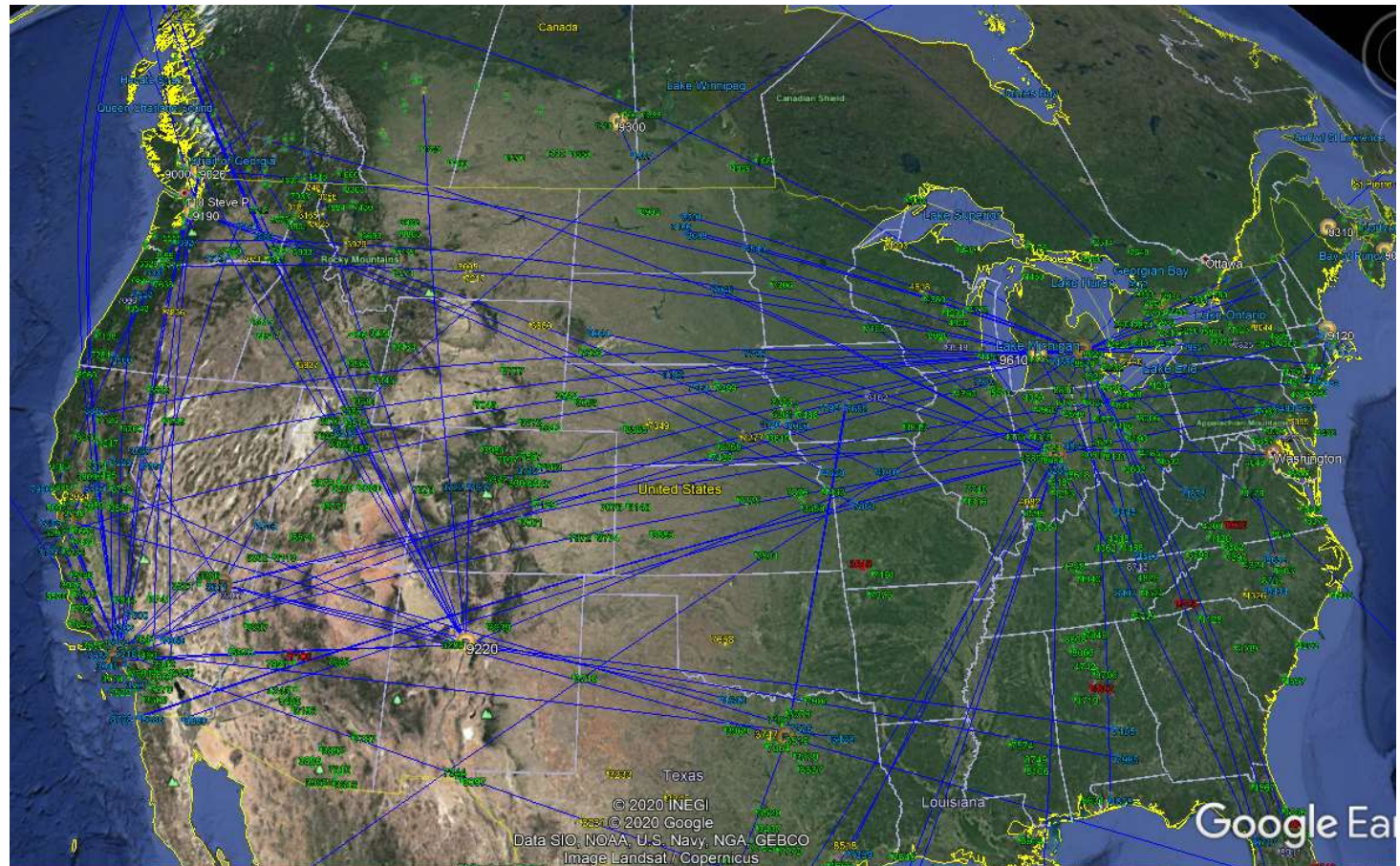
IRLP Google Earth Node Map

- IRLP website has downloadable kml file of active nodes
- Import to Google Earth
- Shows on-line nodes as of download time

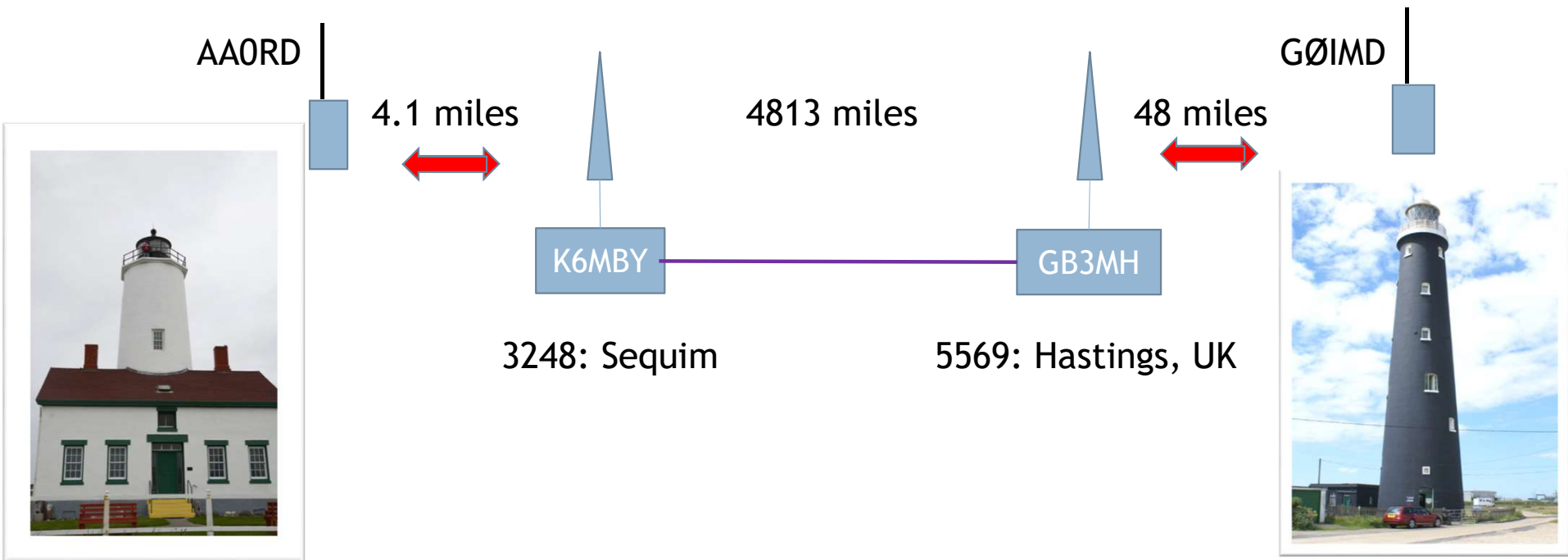


IRLP Google Earth Node Map

- Active nodes



My Lighthouse QSO



Echolink (echolink.org)

- Connects you via radio or internet to an Echolink-enabled repeater
- Free PC or Phone downloaded app
 - Requires call sign verification
 - Download and run Echolink app first, with your call sign in Tools > Setup
 - Send a pdf copy of your license as a reply to the email
 - You must have Wi-Fi or cell data connection to use one of the apps
 - Your side is you only, the repeater side is “hot”
 - No DTMF tones, but loop-back test node
 - Station > Connect To Test Server
 - Adjust Mic and Speaker levels: Tools > Adjust Sound Device



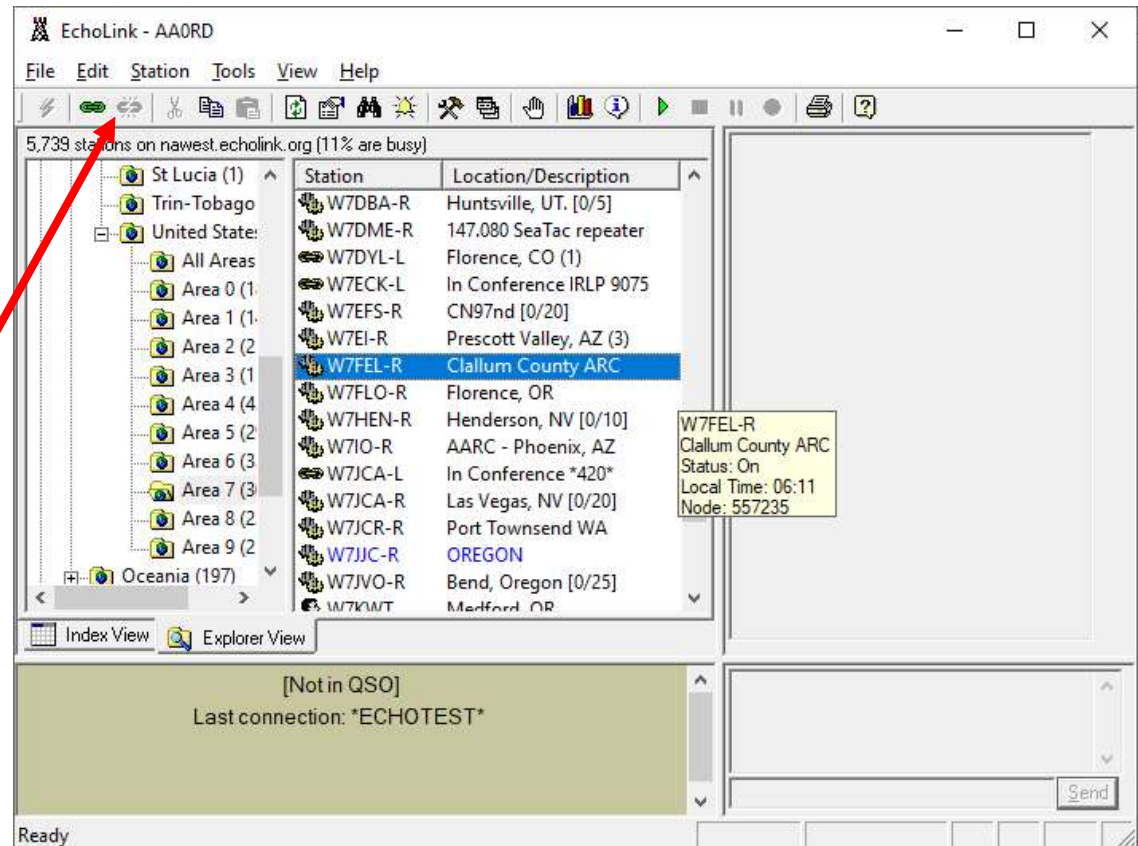
Echolink: Radio Mode

- For radio mode, use DTMF node number codes into the local repeater.
- If the repeater is “EchoIRLP” (supports both modes), then a non-numeric prefix tone will be required to specify an Echolink connection.
 - May not be published
- W7FEL requires C prefix
 - Ex: C71066 for the Hastings, UK 6m repeater
- K6MBY requires # prefix
 - Ex: #45573 for the Antwerp, Belgium VHF repeater



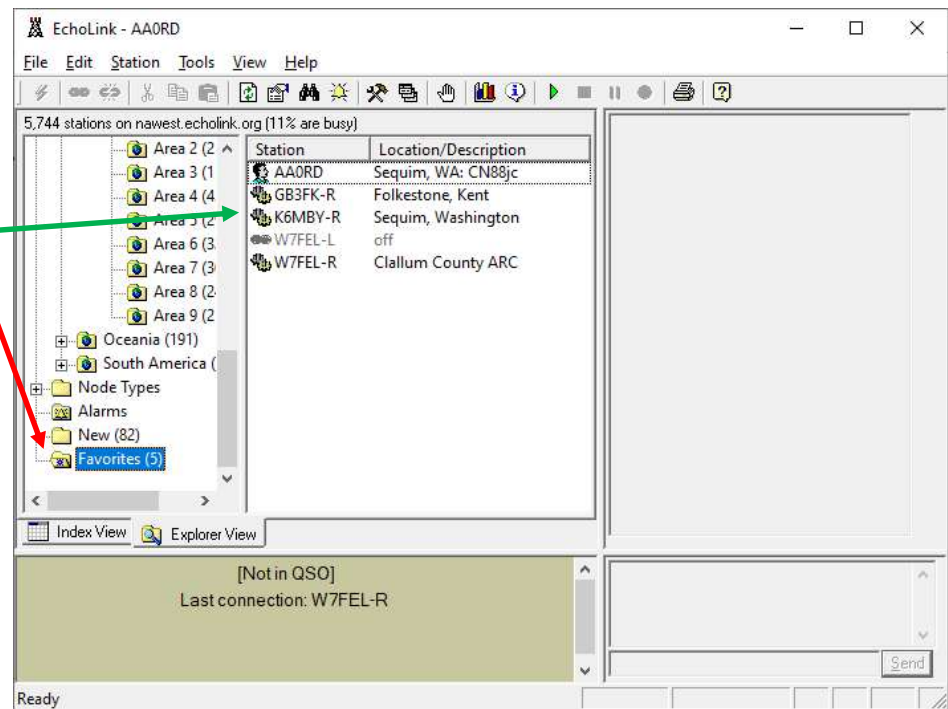
Echolink PC App – Pick a station

- I prefer Explorer View
- Locations > North America >
 - United States > Area 7
 - Select W7FEL-R
- Makes the connection then! Live!
- Or Right-Click: Add to Favorites
- Connect & Disconnect menu icons



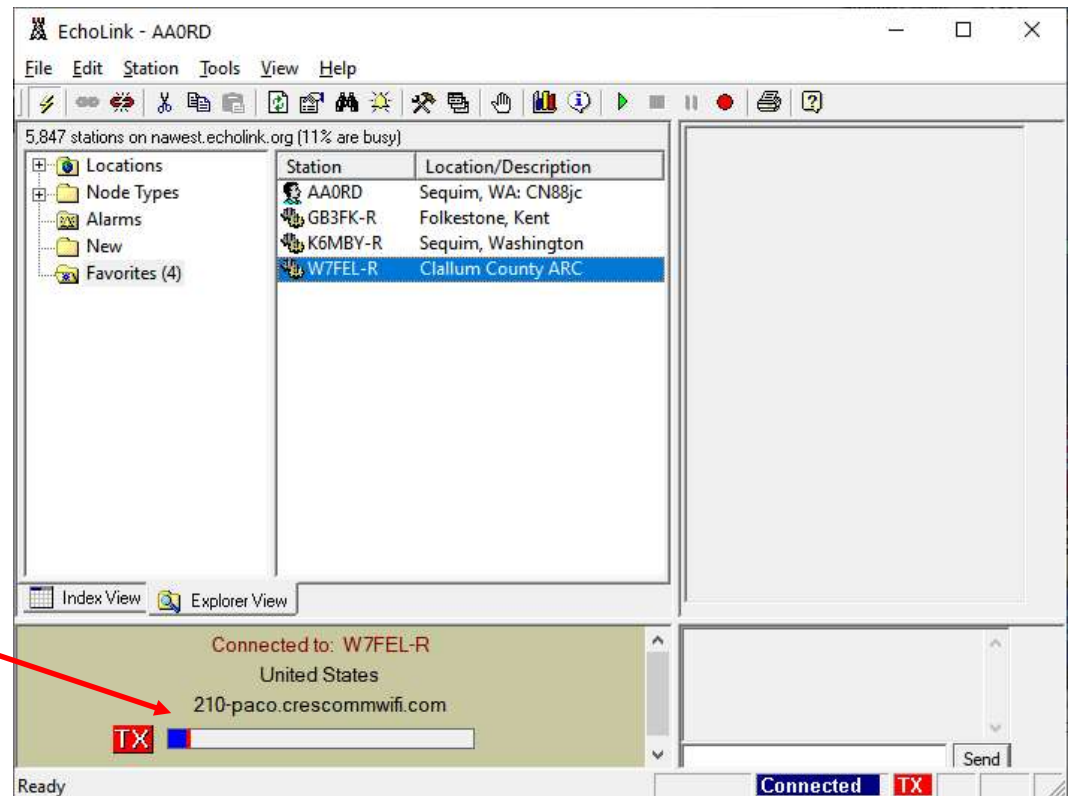
Echolink PC - Favorites

- Favorites “folder” is at the bottom in the Explorer view
- Clicking on a station in the right window will make the connection
- The repeater will announce the connection on that end, and that will echo on your end



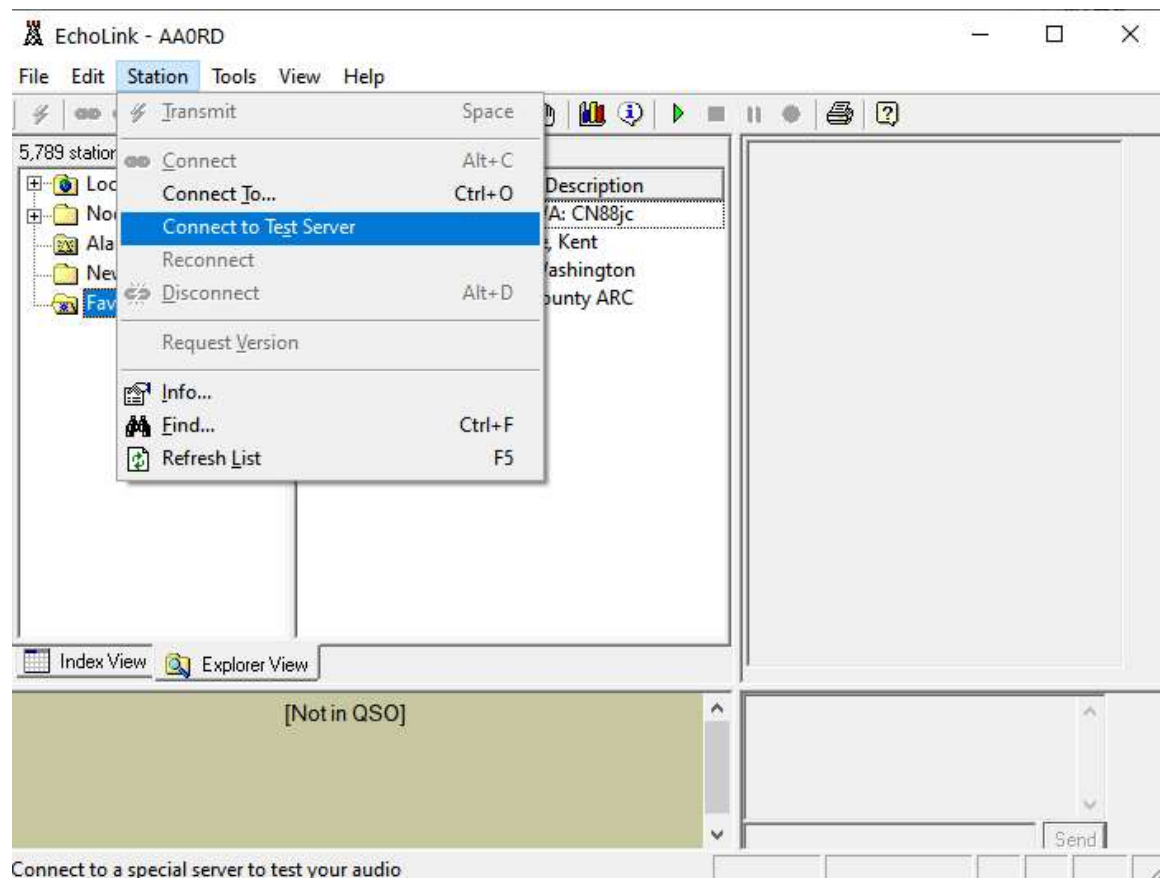
Echolink PC - Talking

- Press the spacebar to toggle transmit on and off, like the PTT button.
- Remember that everyone on the repeater can hear you
- The repeater is busy until you tap the spacebar to toggle Tx off, just like keeping your PTT button down
- The sliding bar indicates your mic volume level, and shows the red TX box



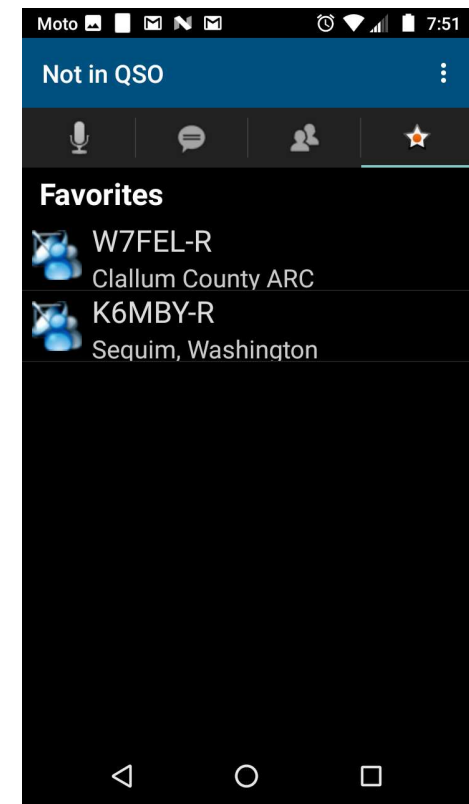
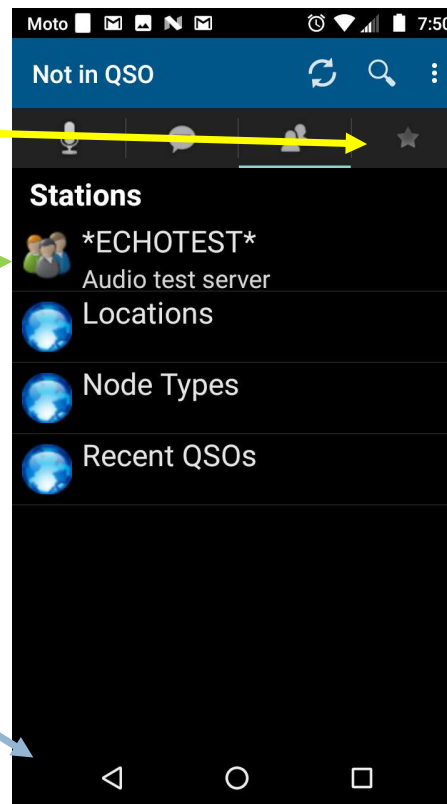
Echolink Loopback Test

- Menu: Station > connect to test server



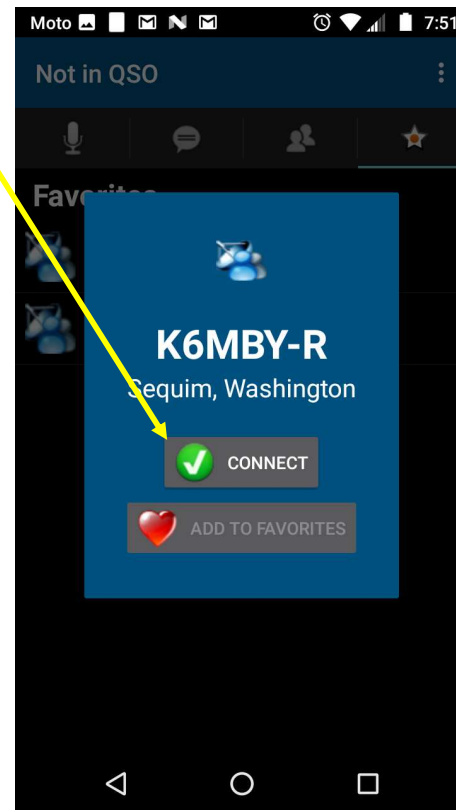
Echolink: Android

- Tap the star to see Favorites
- Loopback test server
- Gotta use “back” arrow to close app



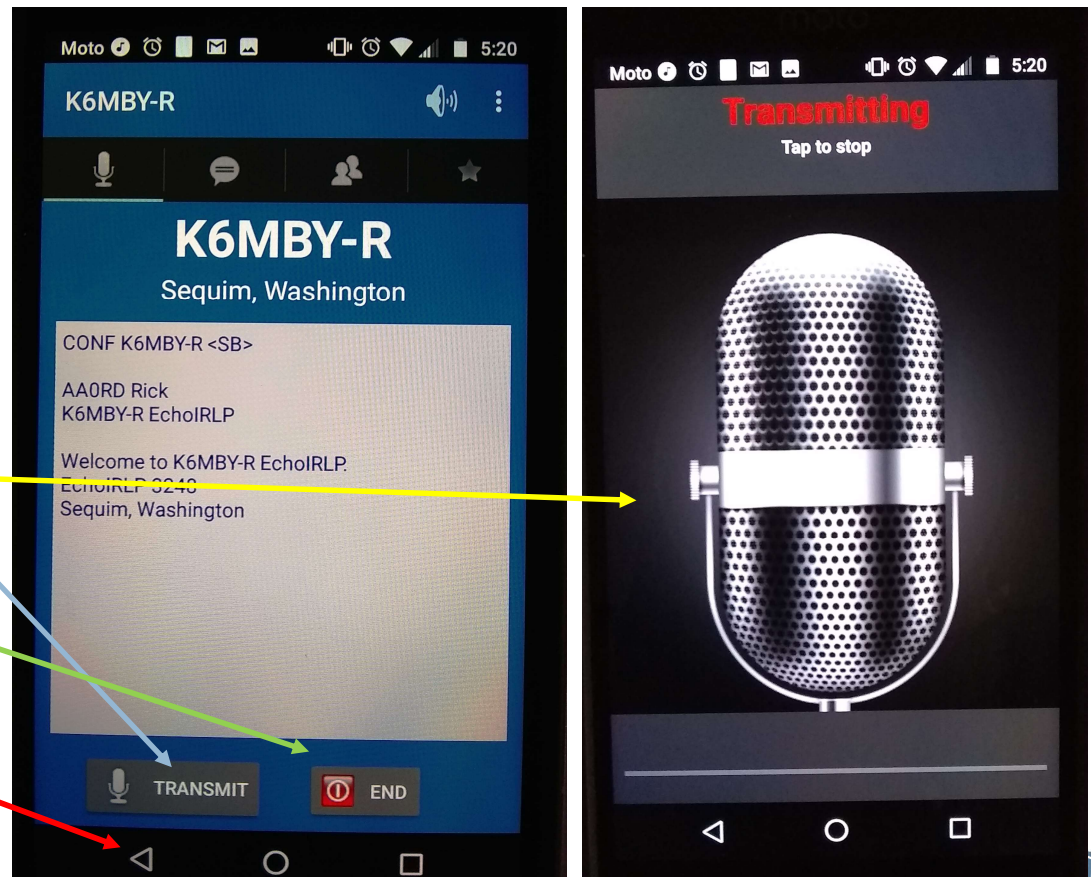
Echolink Android: Select Station

- Tap “Connect”
 - Repeater will announce the connection on that end, and that will echo on your end
- Tap “Transmit” as if using PTT at the repeater.
 - Everyone on the repeater can hear you
 - The repeater is busy until you tap the big microphone image.
- Gotta use “back” arrow to close the app



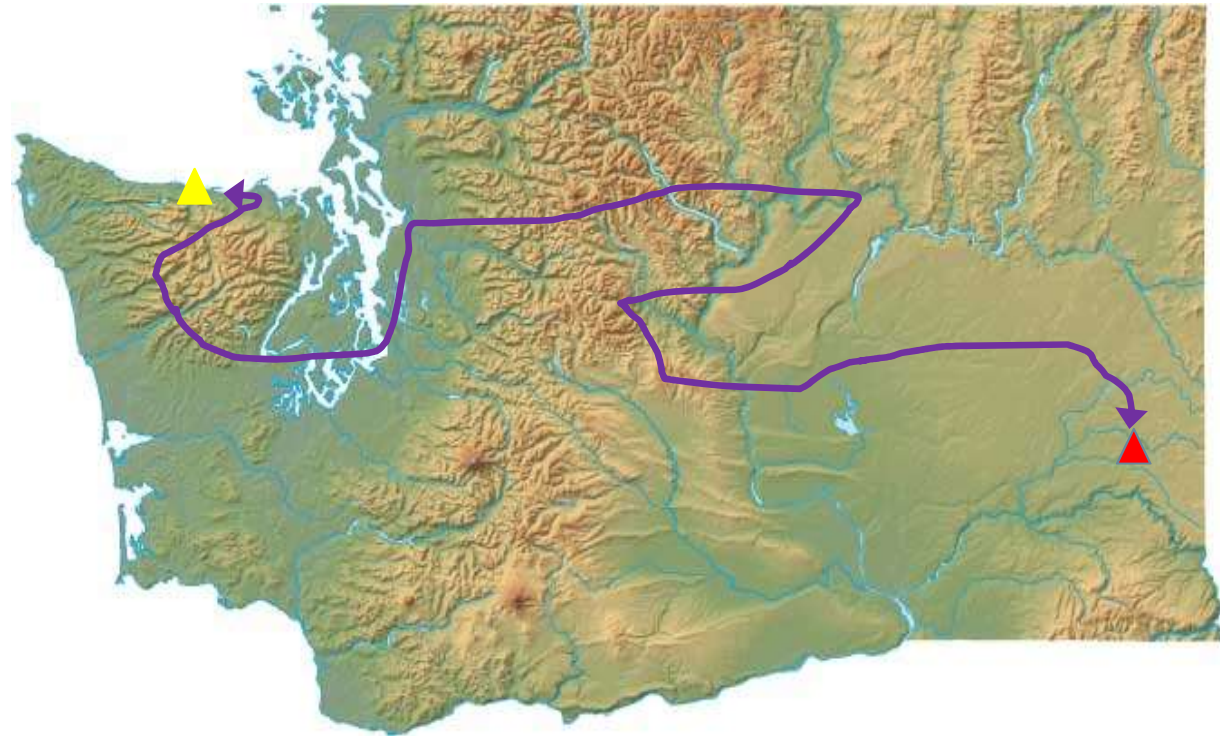
Echolink Android: Connected

- Tap Transmit
 - The microphone screen indicates that you are transmitting at the repeater
 - The repeater is busy, just like using a PTT button
- Tap anywhere on the microphone to stop transmitting.
- Tap End to release the remote connection
- Use the back arrow to close the Echolink app



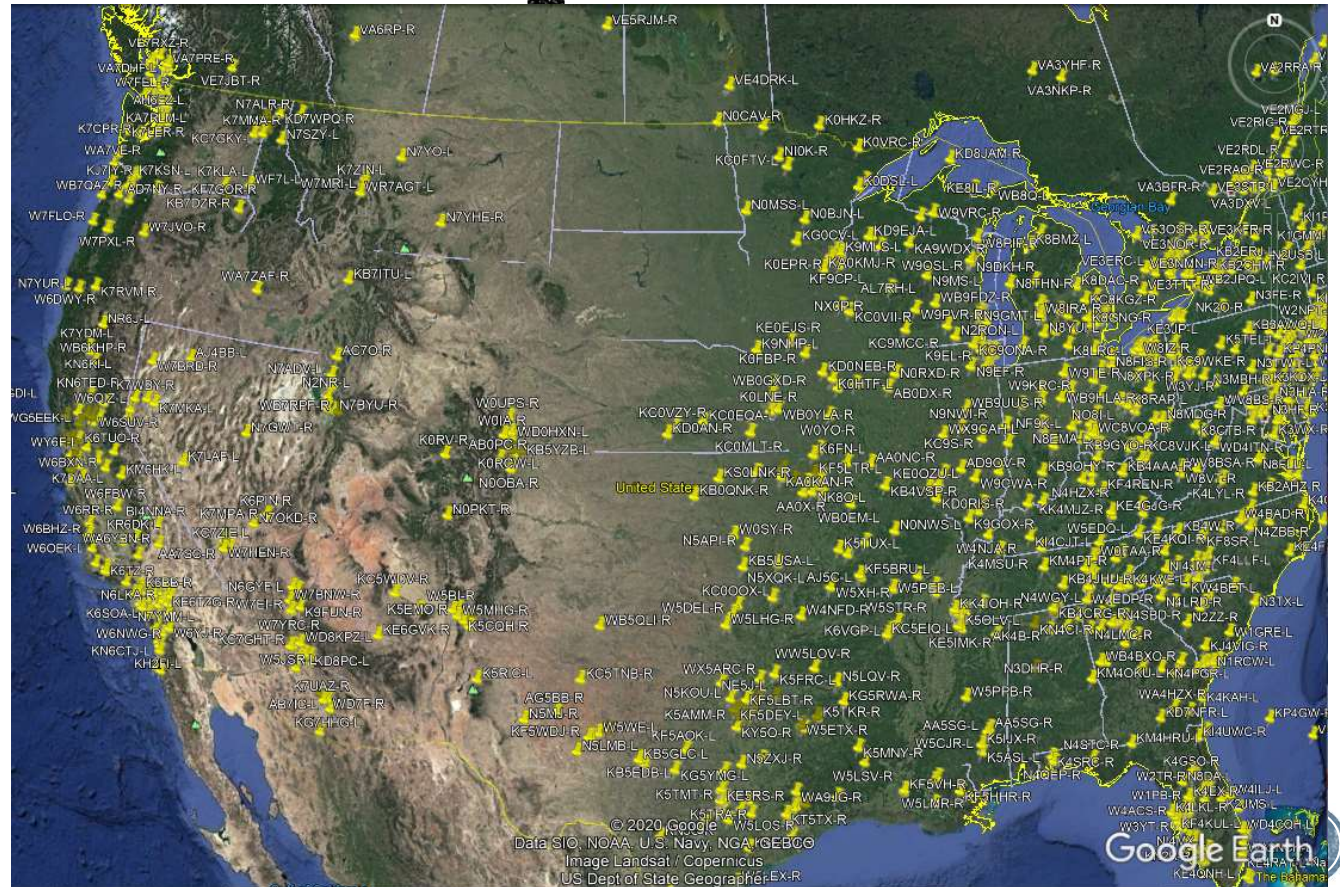
Echolink: Remote Net Check-in

- We attend the Sprint Boat races in St John, WA; near Pullman
- For a long time there was no Sprint cellphone service
- The only reachable repeaters were not IRLP or Echolink enabled
- We park behind the library; which has free open WiFi
- I would connect to W7FEL via my laptop for net check-in



Echolink: Node Map

- Download kml file
- <http://www.echolink.org>
 - Link Status
- Display in Google Earth



IRLP Live Demo!

- Connection to Honolulu, Hawaii
- Node 3080 through K6MBY



