

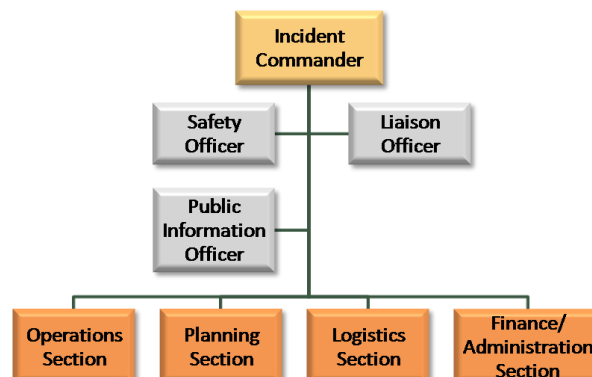
Incident Command System:

Overview

The coordination of tasks, agencies and personnel is necessary to ensure an effective and efficient emergency response. This is accomplished through the use of the Incident Command System (ICS). This handout will review basic ICS terminology.

Incident Command System (ICS)

ICS is the standardized on-scene incident management system used to coordinate emergency responses, including animal health emergencies. The structure is flexible and adaptable, allowing for the cooperation of multiple agencies and jurisdictions.



ICS Structure

ICS is organized in a modular, top-down fashion that contains five functional arms.

Incident Commander – Overall responsibility for managing the incident, sets incident objectives, determines strategies and establishes priorities

Command Staff – Assists the Incident Commander

- **Safety Officer** – Oversees working conditions and personnel safety
- **Liaison Officer** – Primary contact for other agencies involved in response
- **Public Information Officer** – Supplies information to stakeholders, including media

General Staff – Carries out specific functions; led by a Section Chief

- **Operations Section**– Performs operations/tasks to meet response goals
- **Planning Section**– Collects, evaluates, and distributes information; documents incident
- **Logistics Section**– Provides resources, including personnel, materials, facilities, and services
- **Finance and Administration Section**– Monitors and tracks incident costs

Incident Action Plan

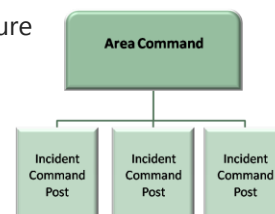
- Oral or written plan of incident goals to provide direction, task assignments, communication methods, and injured personnel procedures.

ICS Position Titles

Organizational Level	Title
Incident Command	Incident Commander
Command Staff	Officer
General Staff/Sections	Chief
Branch	Director
Division/Group	Supervisor
Unit	Leader
Strike Team/Task Force	Leader

Area Command

Adaptation of basic ICS structure used when large complex responses or multiple Incident Command Posts are needed.



Unified Command

Adaptation of basic ICS structure to incorporate representatives from multiple agencies when a response spans multiple jurisdictions. This serves to facilitate information flow and eliminate duplication.

ICS Facilities Terminology

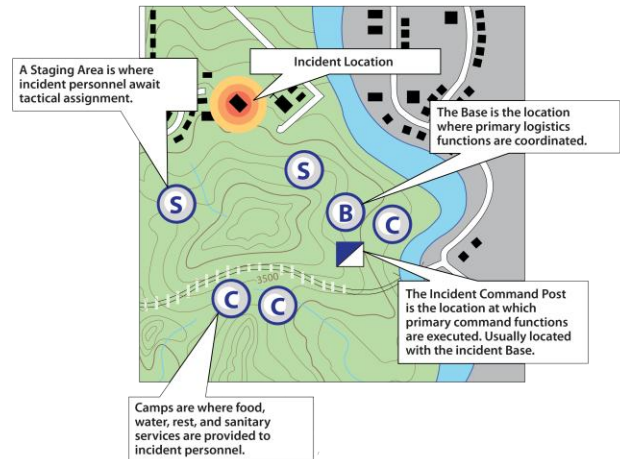
Locations within in the response area also have standardized terminology.

Incident Command Post – Site where all operations are overseen; denoted by a square with blue and white triangles

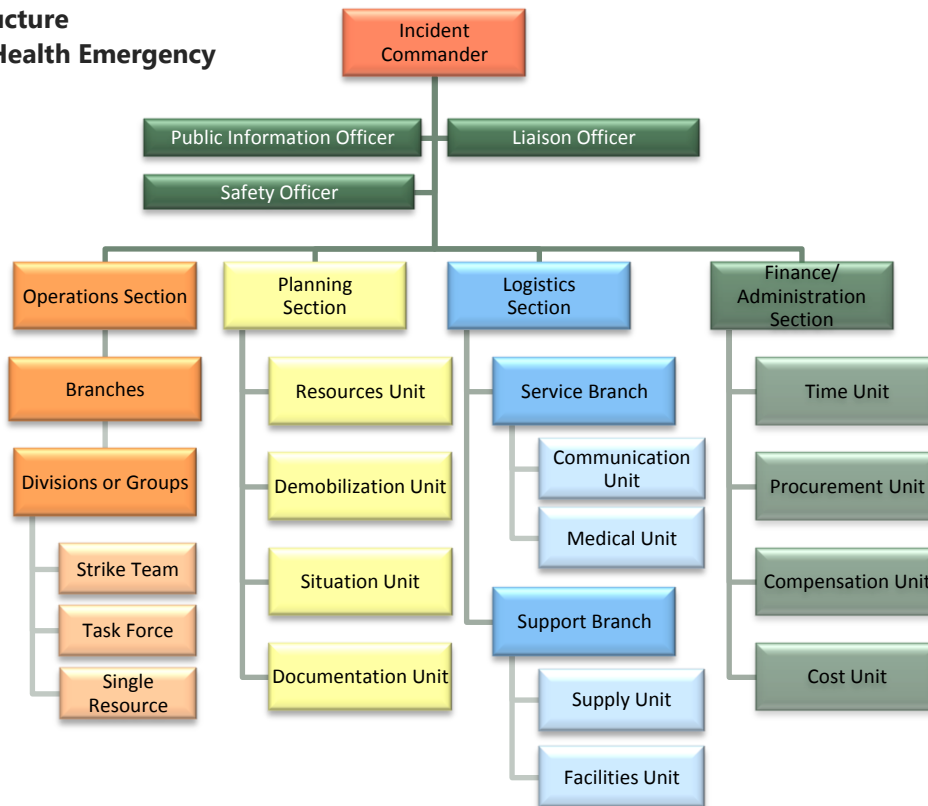
Staging Area – Where resources (e.g., personnel, equipment) are kept while waiting for incident assignment; denoted by a white circle with a “S” inside

Base – Where primary service and support activities (e.g., logistics, administration) are performed; denoted by a white circle with a “B” inside

Camp – Area where essential resources (e.g., food, water, sleeping areas) to support operations are kept; denoted by a white circle with a “C” inside



Sample ICS Structure For an Animal Health Emergency



Additional Resources

USDA Foreign Animal Disease Preparedness (FAD PReP)
www.aphis.usda.gov/animal_health/emrs/nahems.shtm

Federal Emergency Management Agency (FEMA) On-line Training: ICS-100.a; ICS-200.a; ICS-700.a
training.fema.gov/IS/

FEMA NIMS Basic: The Incident Command System
www.fema.gov/pdf/nims/NIMS_basic_incident_command_system.pdf

Development of this educational material was by the Center for Food Security and Public Health at Iowa State University through funding from the Multi-State Partnership for Security in Agriculture MOU-2010-HSEMD-004. June 2010.

